



# Metro Academic & Classical High School



*Recruitment Presentation | Fall 2021*





*Our goal for this evening is to provide you with the information you need in order for you to decide if Metro is the best fit for your student.*

- 370 students
- 60% Females
- Diverse student population
- Balance Responsibility and Privileges

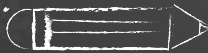
*(open campus, study hall,  
“flipped” classrooms)*

- College Prep



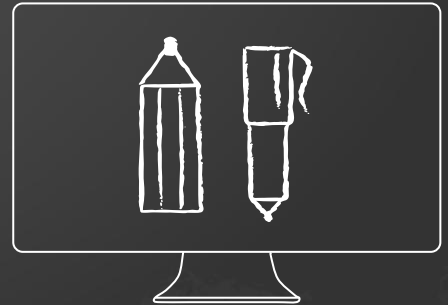


- IB Program/AP Courses for college credit
- ACT Scores (2 students earned 36s last year)
- Our students attend highly selective colleges
- National merit semi-finalists
- Scholarships
- Student Diversity
- Highest Performing Public High School in MO

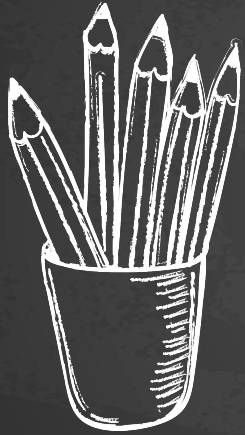


# Admission Requirements

- 90% attendance
- Good Behavior
- Advanced or Proficient on MAP /above 50th percentile on standardized tests in all subject areas
- Cs or better in Core classes, you may have one D in elective courses and still qualify
- 1-2 recommendation forms (linked on application)
- Applicant essay
- Interviews upon request



# Application and Selection Process

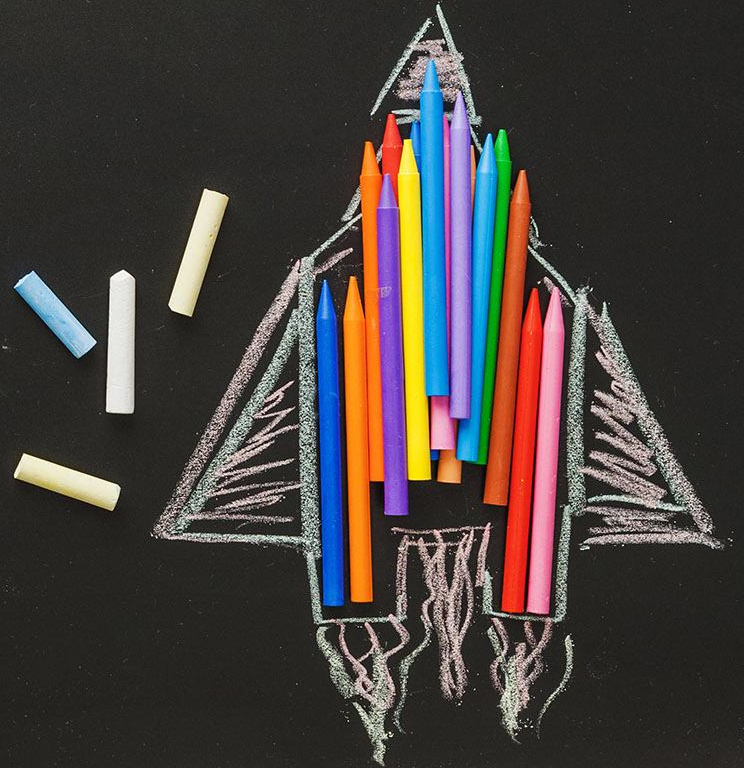


1. Application through the Magnet School website
2. District verifies residency (Lottery eligible)
3. Metro verifies that you meet the eligibility requirements
4. Lottery/Notification from SLPS in late November

*We do not rank applications -only mark them eligible*

# What we do well...

- Prepare students for college
- Provide opportunities to be challenged
- Students earn large amounts of college credit (IB, AP, Dual credit)
- Scholarships, college counseling
- PTO/Parent Support



# Our Challenges

- Limited art, music, and Computer programming courses
- Limited sports (no wrestling or football)
- Limited Facilities – gym, field, classrooms
- Fewer choices for classes - higher requirements for graduation

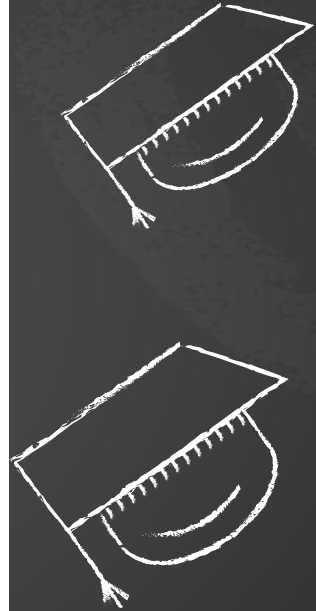




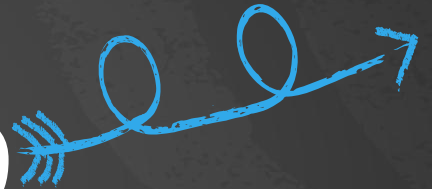
# Graduation Requirements

	<u>Metro credits (years)</u>	<u>State/District</u>
English:	4 credits	4
Math:	4	3
Science:	4	3
Social Studies:	3	3
ACT Test Prep	1 (Eng Prep=.5, Math Prep = .5)	0
World Language:	2 of SAME foreign language	0
Fine Art:	1 Fine Art	1
Practical Art:	1 (Intro to Business)	1
Physical Ed:	1	1
Health:	0.5	0.5
Personal Finance	0.5	0.5
Electives:	<u>6.0</u>	<u>7.0</u>
Total:	28.0	24.0

Must Pass Missouri and U.S. Constitution Exams



**\$30,000,000**



Total Scholarship Amount | Class of 2021



# Freshmen Required Courses



- Biology
- PE
- Foreign Language (French or Spanish) ( placement test)
- Math (*various courses offered, placement tests*)
- American Government (*AP option at teacher discretion*)
- English
- Study Hall
- Computer Programming or Introduction to Art

Questions ?

